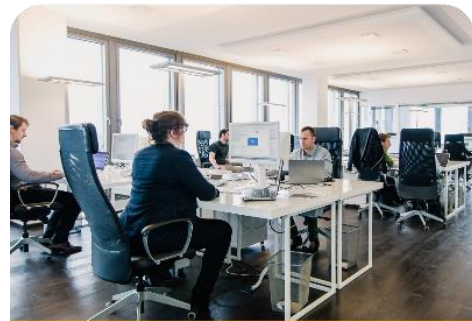


CP PLUS
DEFENCE & BORDER
SECURITY & SURVEILLANCE

CP PLUS Brief Snapshot



1000+ Employees



30000+ Partners Across
450+ Town of India



Presence
In Asean &
Middle
East Region



Integrated
suite of
Intelligent
Vertical Solutions

54 Offices

44 Branch,
RMA/SWAP
Centers



India's largest
Security Solutions Force



India's largest
CCTV Manufacturing Plant

World's 3rd largest

Capacity
1.5 Million
Units Per Month

Bharat MADE IN
Researched • Developed • Manufactured IN BHARAT



CP PLUS Brief Snapshot

Manufacturing Unit at Kadapa-Andhra Pradesh



- ❑ Equipped with worlds latest & high speed SMT Lines, Final Assembly/Testing/ Packaging Lines & High accuracy Function Tests/Reliability Test Equipment's.
- ❑ 100K Sqft production area.
- ❑ 50K Sqft warehouse including 20K sqft airconditioned area for electronic components.
- ❑ Initial capacity - 36 million units annually
- ❑ Expandable capacity - 60 million units annually



250000 Sq. ft.



Reliability & Testing Labs



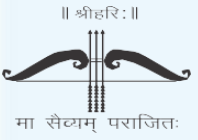
High-speed world's latest SMT lines



Automatic PCB Router Machine



State Of the Art – QA/QC



MISSION TECH

CP PLUS Initiative

**CP PLUS CERTIFICATION
TRAINING PROGRAM FOR
SYSTEM INTEGRATORS &
PARTNERS**

PRODUCT PORTFOLIO



CCTV Camera | Recorders | VDP | T&A | Power supplies | PoE Switch | Cable | HDD | Display Devices
Lan Networking | Body Worn | Explosion-Proof Camera | Anti-Corrosion Camera | Thermal Camera | Kids Tracker | Dash Cam

Solutions

Banking

Ensuring the utmost security for financial institutions, our solutions safeguard the integrity of transactions and help protect sensitive data.



Healthcare

We implement advanced measures to protect patient privacy, secure medical records, and maintain a safe environment.

Education

From access control to video surveillance, we prioritize the well-being of students and staff, fostering a secure educational ecosystem.



Hospitality

Elevate guest safety and peace of mind with our comprehensive security solutions tailored for the hospitality industry.



Law Enforcement

Empowering law enforcement agencies, our cutting-edge solutions enhance public safety and optimize crime prevention efforts.

Smart Traffic

Optimizing traffic management & safety, we utilize intelligent technologies to enhance traffic flow and reduce congestion.

Industrial

For industrial sectors, our security solutions are designed to mitigate risks and protect critical infrastructure.



Retail

From preventing theft to ensuring a safe shopping environment, we deploy integrated security measures to safeguard retail businesses.

AIL SOLUTIONS COVERED

- ❖ Border Entry/Exit- Camp Security.
- ❖ Perimeter Security.
- ❖ Emergency SOS Smart Poles.
- ❖ Mobile Solution.
- ❖ Body Worn Solution.

SECURITY: REGION OF INTEREST



LAND BORDERS



BORDER PATROL



MILITARY BARACKS



MOUNTAIN BORDERS



CHECKPOINTS



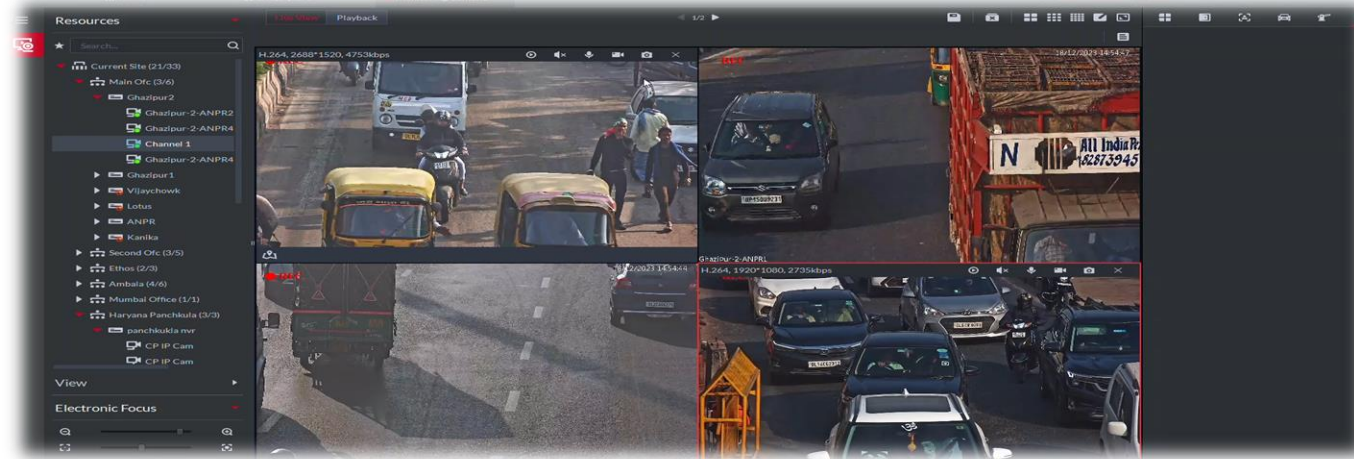
LAW ENFORCEMENT

VEHICLE LICENSE PLATE DETECTION

BORDER ENTRY / EXITS

ANPR CAMERA

- ❖ 4MP IR AI Enforcement Camera.
- ❖ Highlighting Blacklisted Vehicles.
- ❖ Keeping record of all Vehicles crossed.



Boom Barrier & ANPR Integration

Car approaches

Camera recognize license plate -> register to management system

Barrier opens automatically



Entrance / Exit

BACK

AI Face Recognition

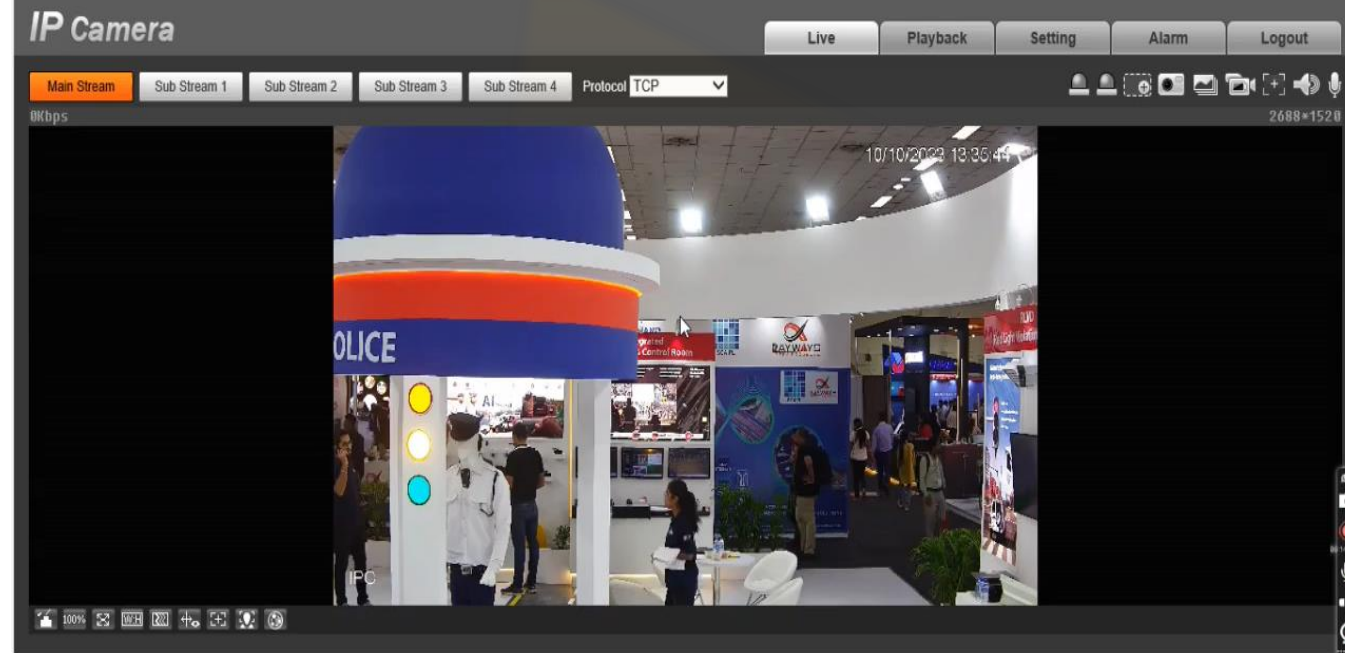
BORDER ENTRY / EXITS

- 4MP AI WDR IR Network Bullet Camera.
- Record of all Persons crossing border.
- Highlighting of any blacklisted person.

- ❖ 1/1.8" 4MP PS CMOS Image Sensor (4.572 cm)
- ❖ Max outputs 4MP (2688×1520)@50fps/60fps
- ❖ Insta-stream and H.264+ coding, high compression ration
- ❖ Five streams for three-channel HD video
- ❖ WDR(140dB), Day/Night (ICR), 3D-DNR, EIS, Defog.
- ❖ 2.7-12mm motorized lens
- ❖ IR Range of 60 Mtrs, IP67, IK10, PoE, SD Card
- ❖ With deep learning algorithm, it supports people
- ❖ Person counting, face recognition, perimeter protection.



G SERIES



PERIMETER INTRUSION

INTRUSION DETECTION

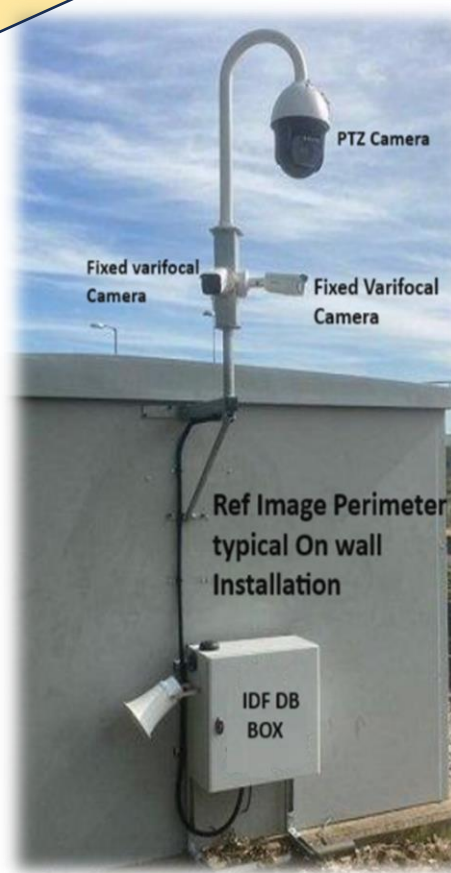
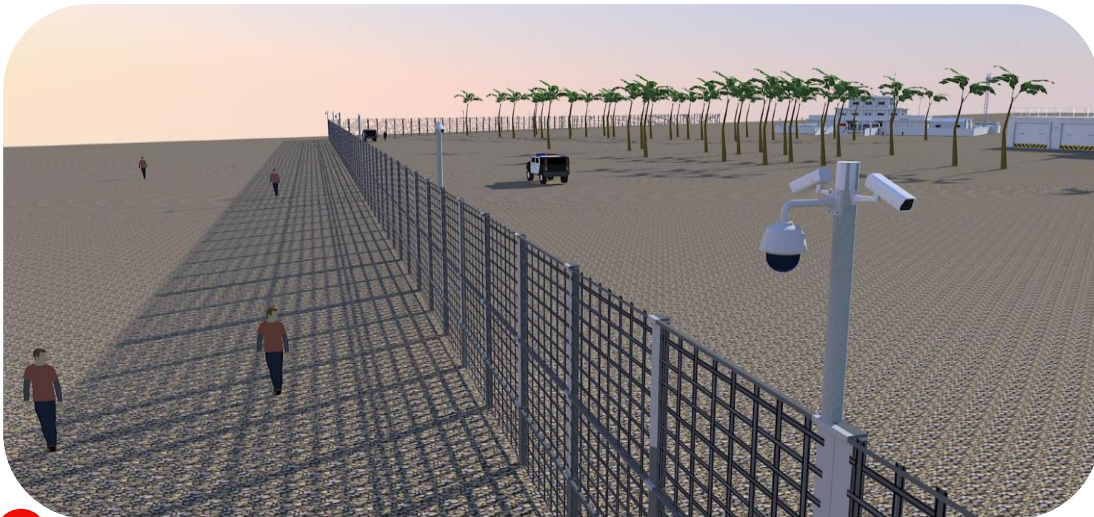


45X Network PTZ



8 MP - E Series

PERIMETER SECURITY PETROLLING & DISPATCH



Challenges

Intrusion from perimeter

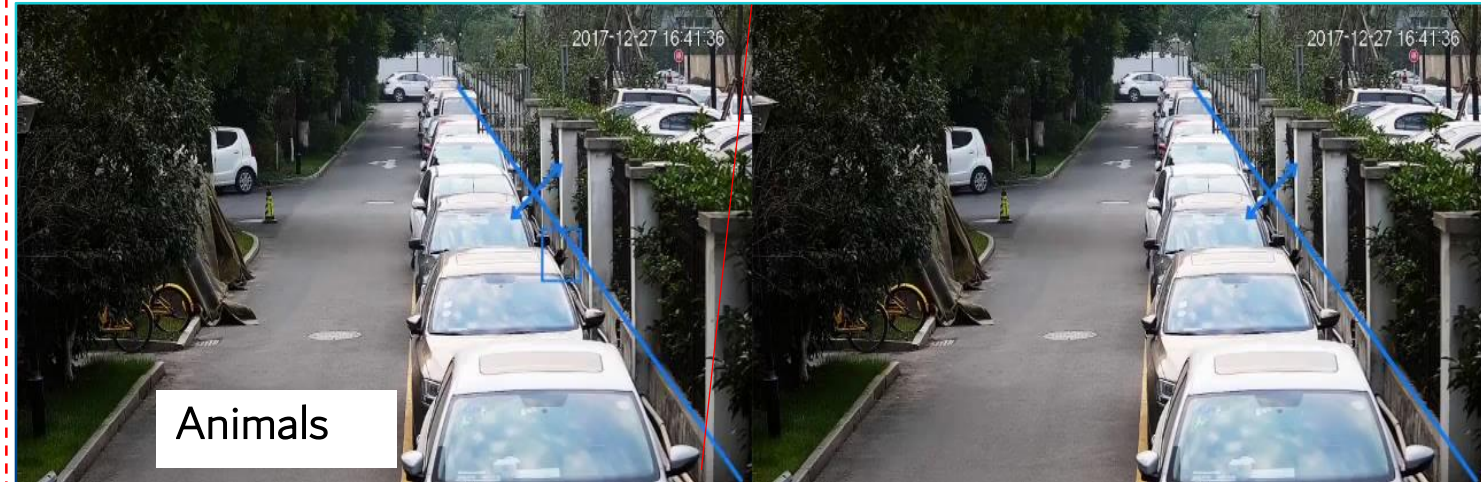


Too many false alarm



Accurate Detection and Alarm

False alarm rate: <2%, Accuracy rate: 95%~99%



Intrusion Detection:

- Active Deterrence can deter intruders, Easy expansion with optional Siren to realize Active Deterrence

Reduce Labor Costs:

- Intelligent algorithm improves accuracy and reduces repeated confirmation by security personnel.

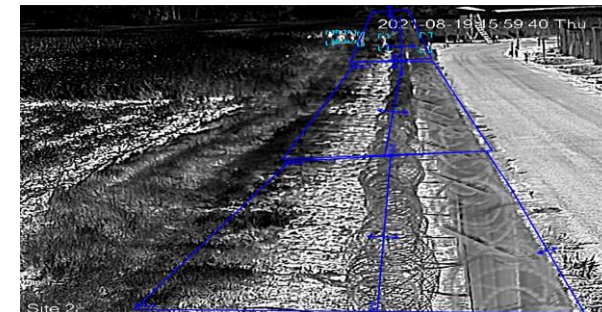
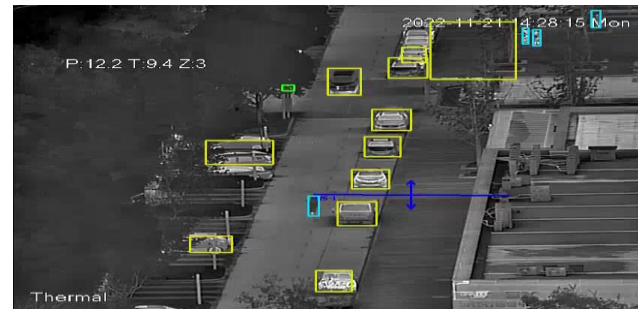
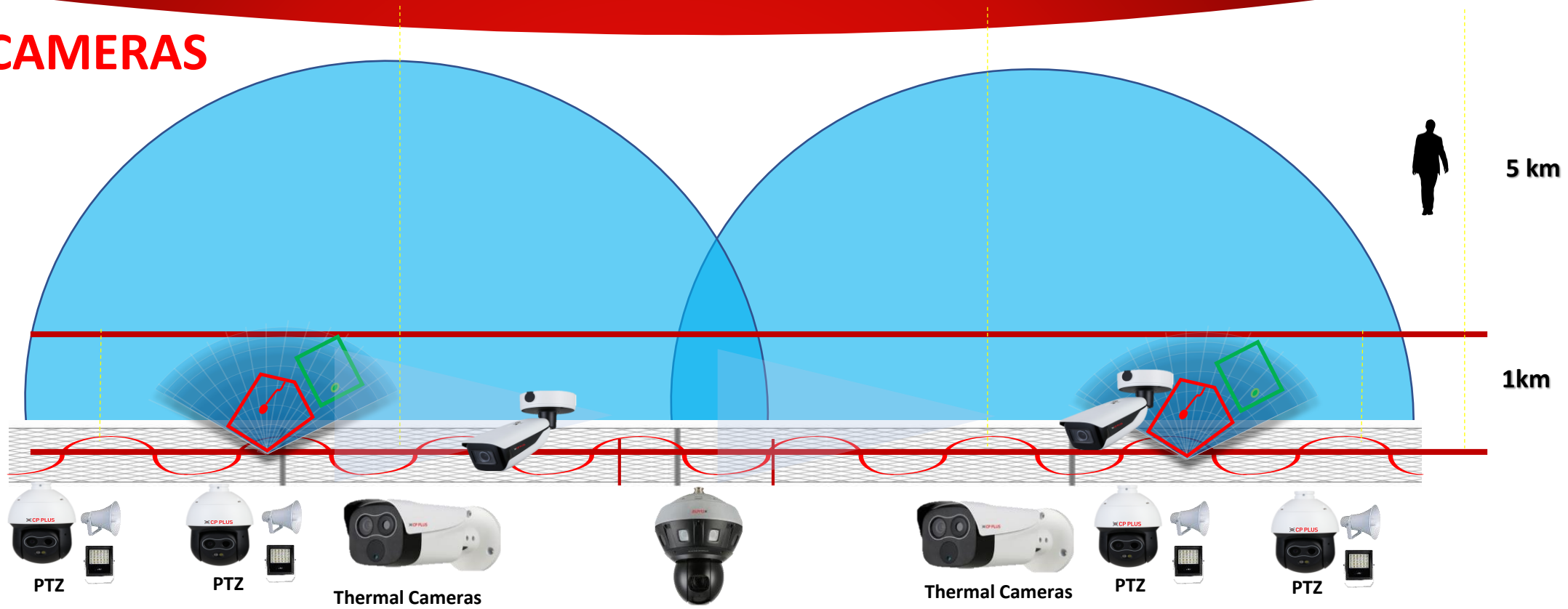


E/G Series Camera

PERIMETER INTRUSION DETECTION

THERMAL CAMERAS

Defensive line



Advanced Edge Analytics



Tripwire Detection



Intrusion Detection



Face Detection



Scene Change



Lost & Found

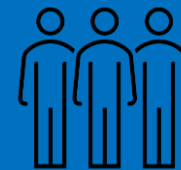
Abandoned Object



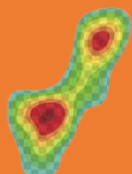
Missing Object



Loitering Detection



People Counting



Heatmap



ANPR

RESTRICTED AREA LOITERING DETECTION

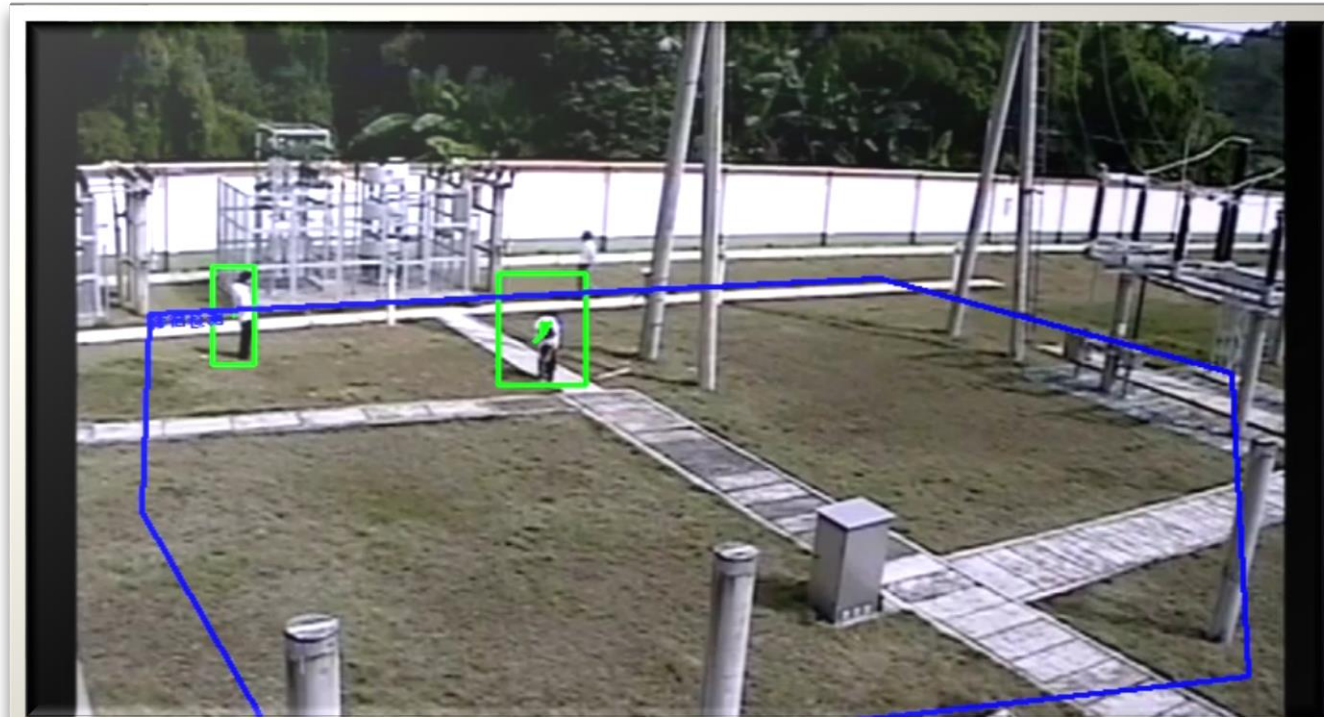
RESTRICTED AREAS

4MP AI WDR IR Network Bullet Camera.

- ❖ 1/1.8" 4MP PS CMOS Image Sensor (1.411 cm).
- ❖ Outputs max. 4MP(2688 x 1520)@30fps.
- ❖ Insta-stream, H.265, Smart H.264+ Triple-Stream encoding.
- ❖ Support Starlight Technology.
- ❖ WDR(120dB), Day/Night (ICR), 3D-DNR, EIS, Defog.
- ❖ 10mm~ 40mm Motorized Lens.
- ❖ IR Range of 120 Mtrs, Micro SD Card, IP67, IK10, ePoE, PoE.
- ❖ Support SMD 3.0



G SERIES



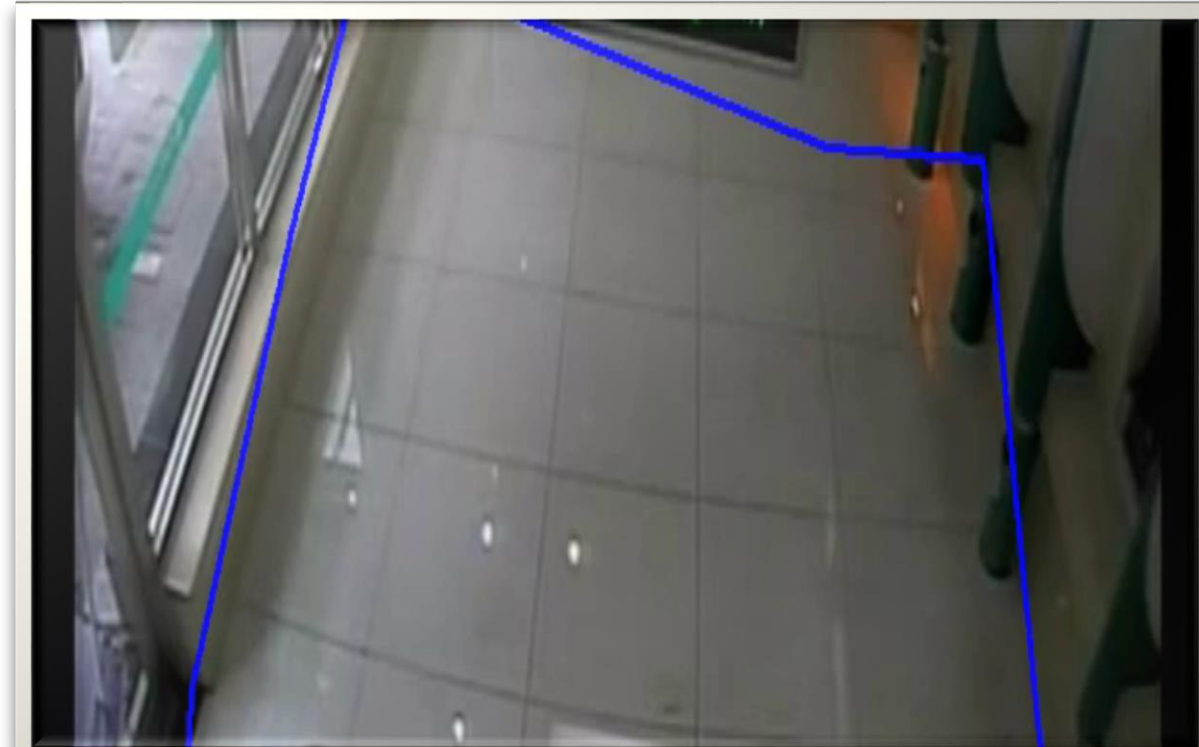
UNATTENDED LEFT OBJECT DETECTION

4MP AI WDR IR Network Bullet Camera.

- ❖ 1/1.8" 4MP PS CMOS Image Sensor (1.411 cm).
- ❖ Outputs max. 4MP(2688 x 1520)@30fps.
- ❖ Instastream, H.265, Smart H.264+ Triple-Stream encoding.
- ❖ Support Starlight Technology.
- ❖ WDR(120dB), Day/Night (ICR), 3D-DNR, EIS, Defog.
- ❖ 10mm~ 40mm Motorized Lens.
- ❖ IR Range of 120 Mtrs, Micro SD Card, IP67, IK10. Support SMD 3.0.



G SERIES



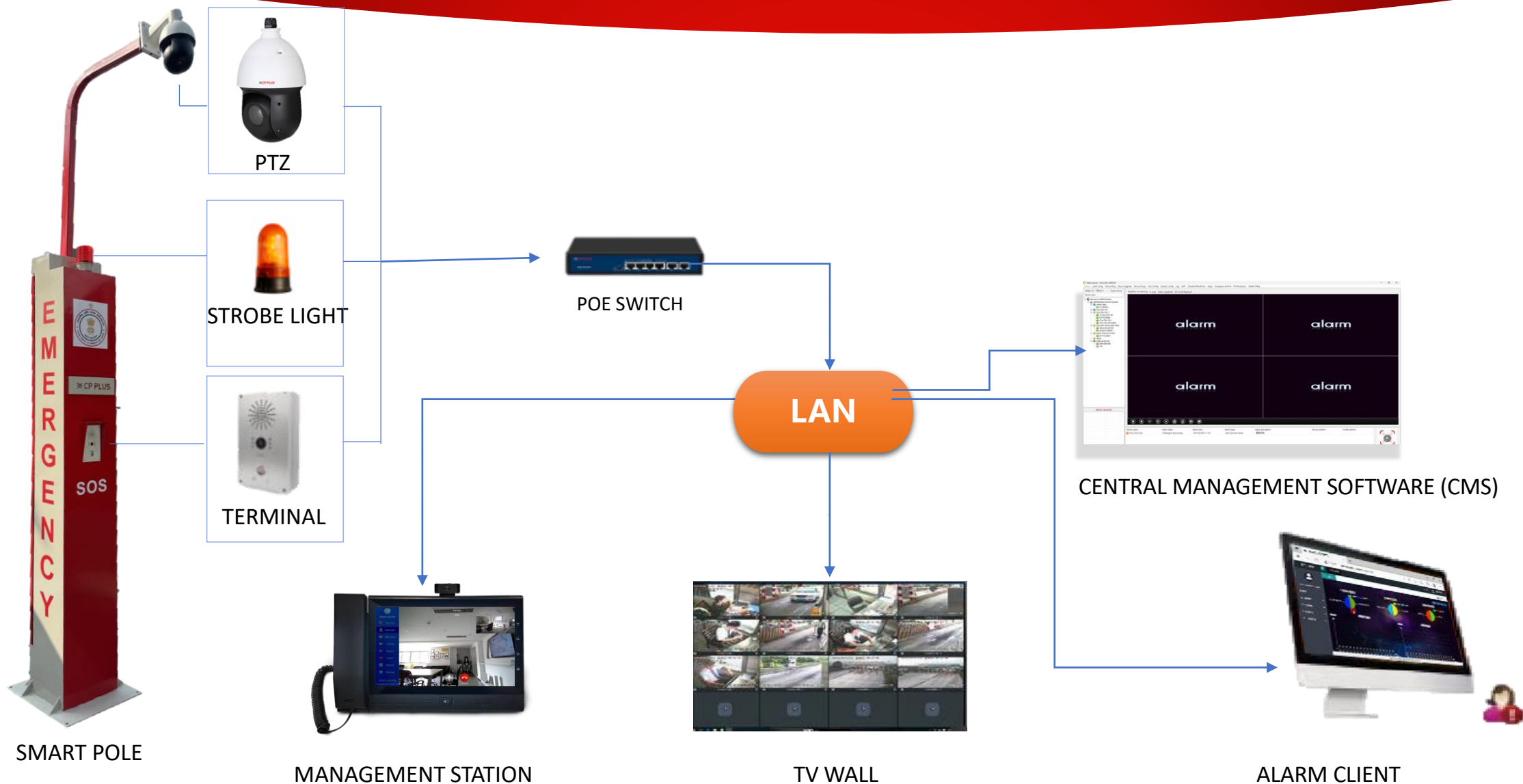
The logo for CP PLUS, featuring a stylized 'X' symbol with a red diamond in the center, followed by the text 'CP PLUS' in a bold, red, sans-serif font.

CP PLUS

EMERGENCY SMART POLE Solution



System Architecture



Body Worn Solution



Body Worn Products

1

To record interactions of police officers with the public

2

To ensure both officers and citizen accountability

3

To instruct quick response team while being in live action

4

To gather tamper proof evidence of violating traffic rules, crime scenes, etc.

5

To get the live incident report of traffic junctions, highways or other sensitive area

Body Worn Camera



online

CP-EBC-1073-K



offline

CP-EBC-4413



offline

CP-DBP-H20

Data Terminal



CP-EDS-Y08

Accessories



Chest Clip



Shoulder Clip



External
Camera

Body Worn Insights



3G/4G for Control Room Monitoring



Inbuilt GPS Tracking



Inbuilt Wi-Fi Support



LED Screen For Live Monitoring



Up to 8 hrs. Battery Backup



2.5 Meter Drop Testing



IP67 Support for all Weather condition



Built-in Storage up to 128GB

Discrete Features – Body Worn

- ✓ Face Recognition : The new body worn solution with face detection and face Recognition (Optional)



CP-EBC-1073-K



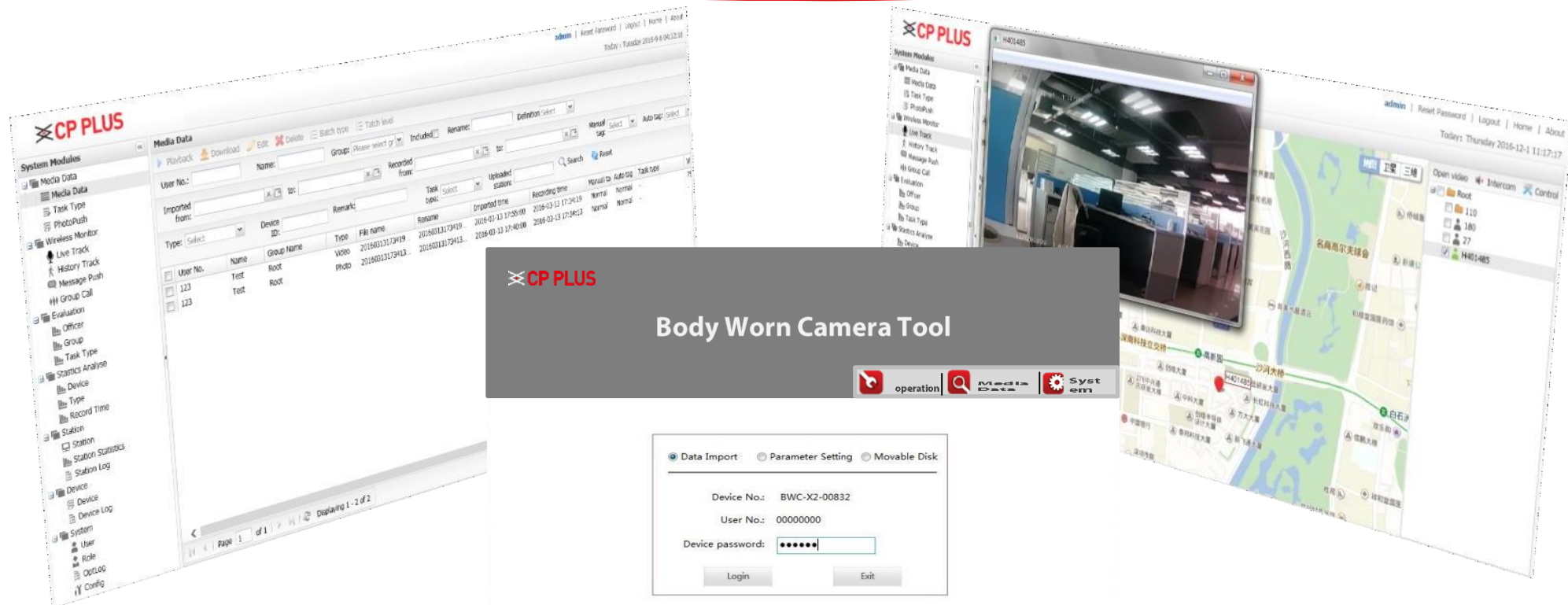
Name: Ankit
Mishra
Status : Whitelist

Discrete Features – Body Worn

✓ Video upload on centralized server



Management Software



Data Management

Wireless Monitor

Static Analysis

Terminal Management

Evaluation

System Setting

MOBILE SOLUTION



Vehicle Tracking & Monitoring

- Real-time recording and positioning including vehicle travel area, travel path, speed, acceleration, deceleration, and steering.
- System support remote management and scheduling.
- Supports Wi-Fi and 3G / 4G mobile networks with automatic switching.
- Supports automatic wake-up and offline functions.



Card Reader



Panic Button



Camera

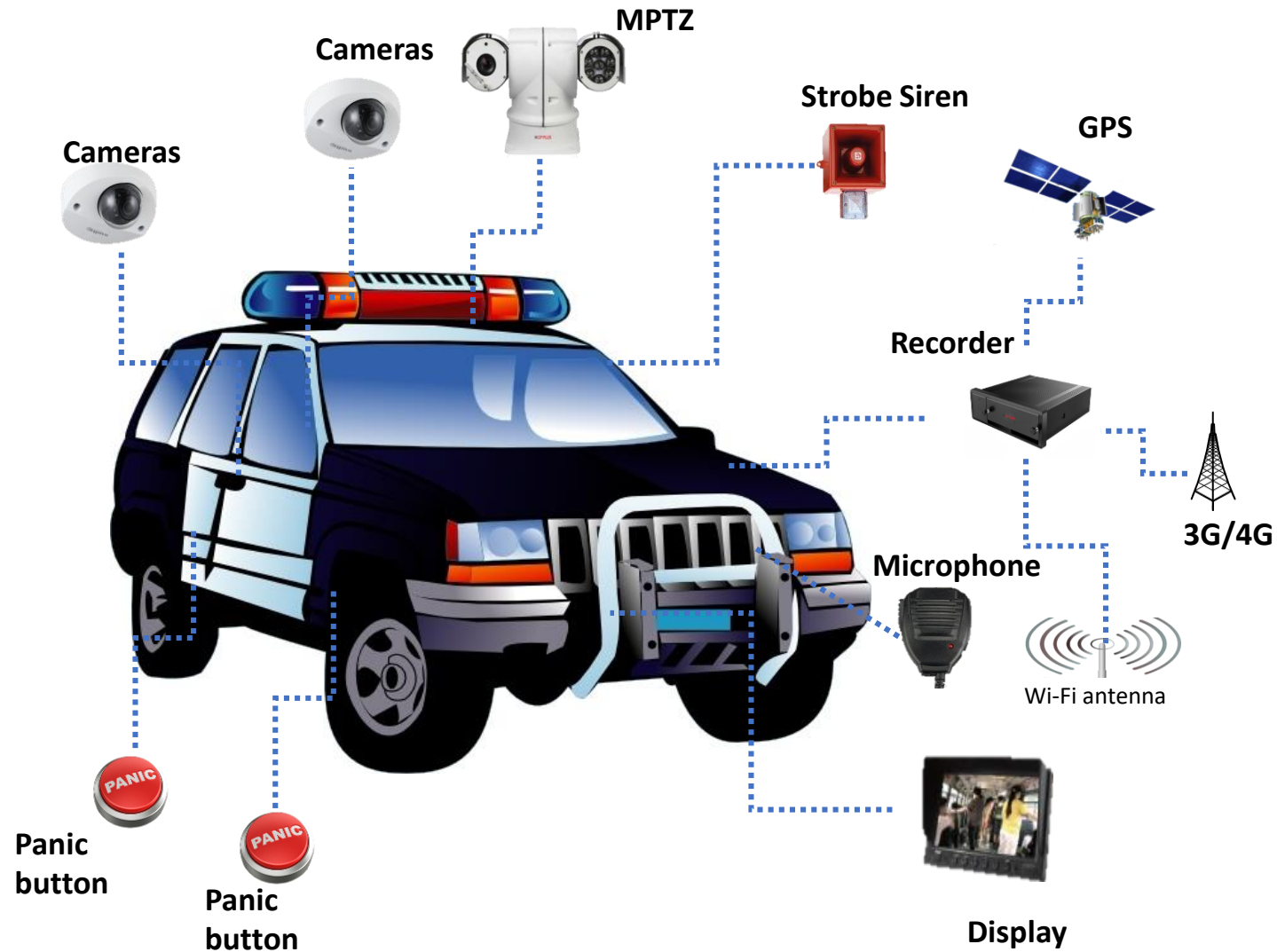


Mobile NVR



Screen

Vehicle Components & Mounting



Central Management VMS



Video Management: EVMS Pro

- ✓ CP PLUS Enterprise Video Management Software, is a Server Client (S/C) architecture and modular design.
- ✓ CP PLUS EVMS support different modules to make solution for any kind of project. It is an integrated video management system to support different category products apart from CCTV.
- ✓ CP PLUS EVMS is open platform for large scale installations.





Live video monitoring & Playback



Alarm pop-up/ notification through mail, SMS etc.



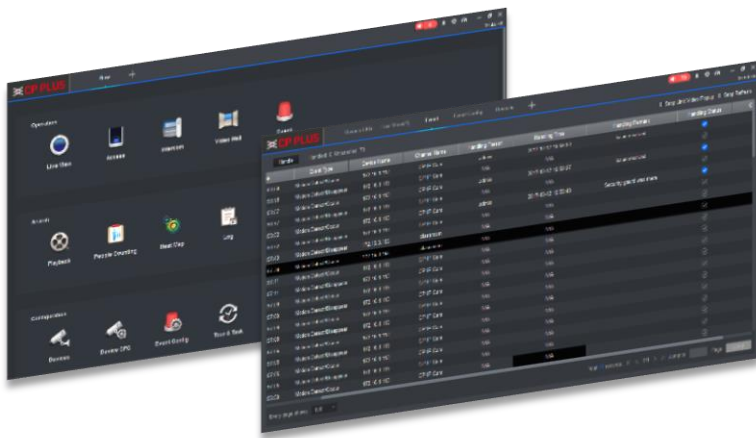
Health Monitoring for HDD status, network status etc.



Video Wall, combine multiple screen to perform multiple task



E-Map, geographical view of the campus with cameras



EVMS Pro Integrated Platform



Extends your surveillance with add-ons.



Live View



Playback



Event



Video Wall



Map



ANPR



Face Recognition



Thermal



Business Intelligence

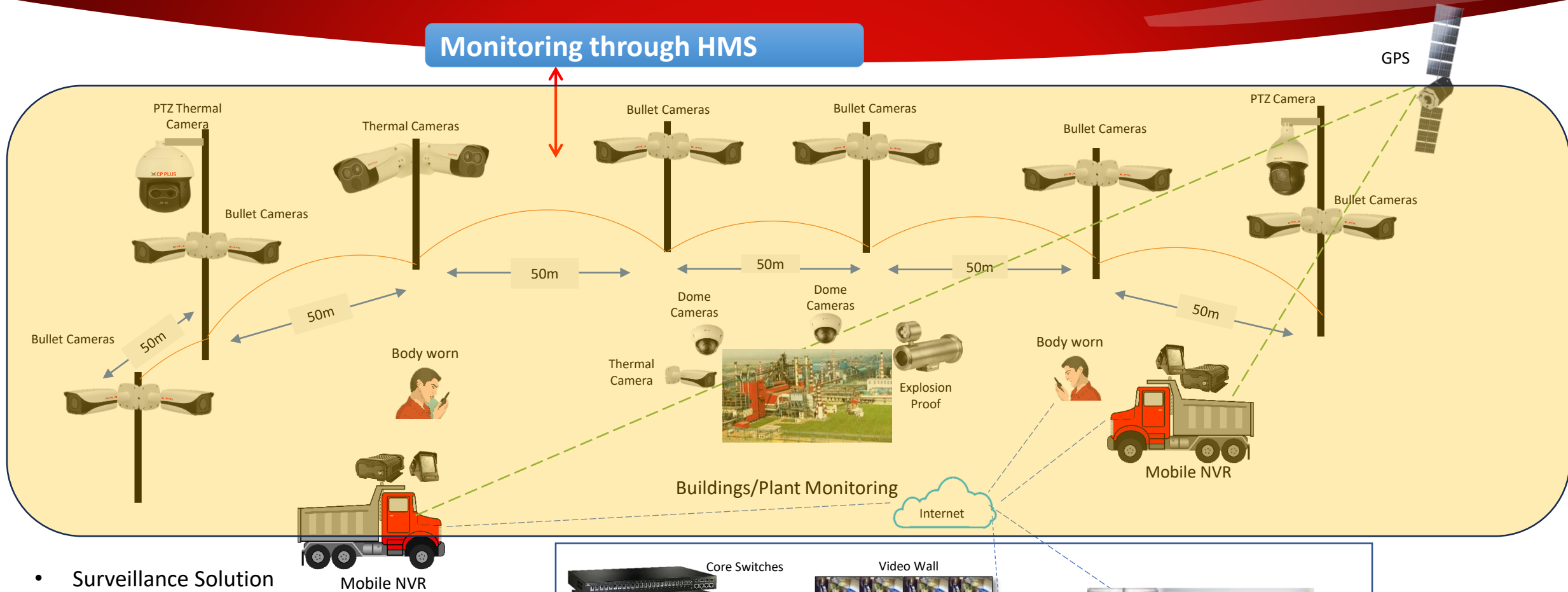
.....

- ✓ The issues with current surveillance system
 - After installation of CCTV system, we don't check working status of devices
 - No evidence video found due to nonfunctional CCTV system
 - No alerts for failure of devices or recording.
 - Loss of actual significance
- ✓ To overcome these issues CP Plus introduces HMS (Cloud monitoring system), which give us
 - Regular Health check of our CCTV system
 - Instant alerts for critical incidents mentioned below

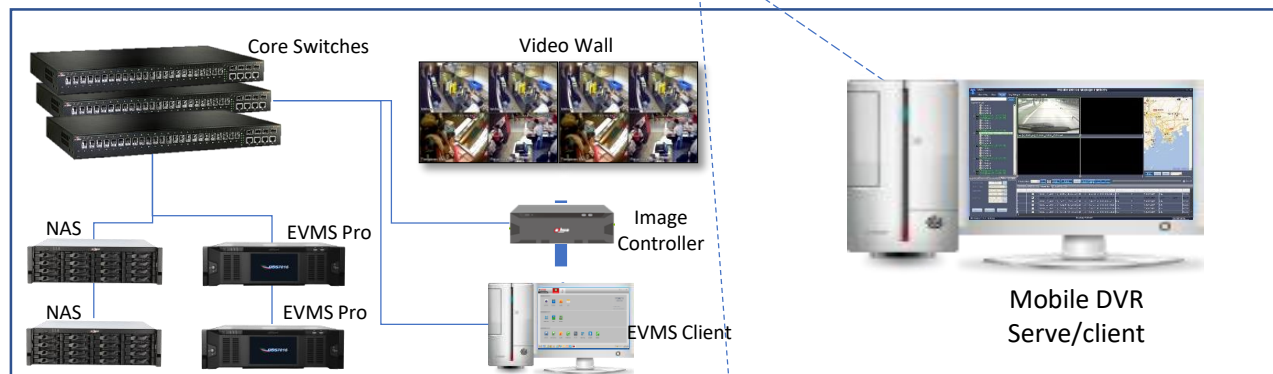


Solution Architecture CP Products

Monitoring through HMS



- Surveillance Solution
 - FR & T&A
 - ANPR
 - Thermal & Explosion
 - AI Fix & PTZ cameras
- Mobile NVR Solution
- Body Worn Camera



 **CP PLUS**

 **CP PLUS**



**upar wala
sab dekh
raha hai**

Jai Hind